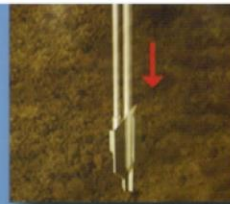


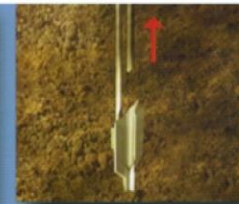
**MANTA RAY® ANCHOR PERFORMANCE**  
 REVOLUTIONIZES "MARINE" ANCHORING TECHNOLOGY

MANTA RAY anchors are driven into the ground, not augured or torqued. No holes are dug, thus no disturbance or displacement of soil occurs during installation.

The anchors are driven with conventional hydraulic equipment that is readily available worldwide. Once driven to the proper depth, remove the drive steel and then pull up on the anchor rod to rotate the anchor into undisturbed soil - like a toggle bolt in dirt. This is called "anchor locking" the anchor (using the MANTA RAY Marine Anchor Locker). The anchor rod is pulled to reach the holding capacity required which is measured by a gauge on the Anchor Locker. Each anchor is immediately load tested to the exact capacity required. Installed capacities are soil dependant. No other system offers this feature. **NO MORE GUESSWORK!**



Drive Anchor



Remove Drive Steel



Pull Rod To Lock



Load Test



**THE TOTAL SYSTEM (Hot Dip Galvanized)**

The complete anchor system consists of the MANTA RAY Anchor, a 7" (2.14m) x 1" (25mm) threaded anchor rod (or equivalent), extension anchor rod pieces if necessary and a swivel eye attached at the terminus.



Swivel Eye allows 360° anchoring performance when used on standard mooring installations.



**MR-SR**

- 40,000 lbs (178 kN) Ultimate Tensile Strength Anchor
- Working loads (2-1 Safety Factor) 20,000 lbs (89 kN)
- Largest of the most commonly used anchors for "Softer" soils
- Hot Dip Galvanized



**MR-1**

- 40,000 lbs (178 kN) Ultimate Tensile Strength Anchor
- Working loads (2-1 Safety Factor) 20,000 lbs (89 kN)
- Most commonly used anchors for "Normal / Medium" soils
- Hot Dip Galvanized



**MR-2**

- 40,000 lbs (178 kN) Ultimate Tensile Strength Anchor
- Working loads (2-1 Safety Factor) 20,000 lbs (89 kN)
- Used extensively for "Hard, Dense, Cobble" soils
- Hot Dip Galvanized